



Award Studies Problemaz 2008

MT Mohamed H.Bahaoui (22/10/1933- 19/07/2007)

By Harold van der Heijden

FIDE judge for endgame studies

26/09/2012, Deventer, the Netherlands

First I have to apologise to the composers and readers of *Problemaz* for my seriously delayed award. Unfortunately, the overall level of the tourney was low, with only a single study standing out, which however would probably not have won high distinction in a major tourney. A positive point is that all studies seem to be sound!

The following studies did not make it into the award:

#255: 7.Bh2!! is a nice move, but (in the lines provided to me) the composer manages to hide the subtle difference between 7.Bg3? and 7.Bh2! After 7.Bh2! Kc1 8.Kc3 Kd1 9.Kd3 the difference is that after 9...c5 10.Kc3 Ke2 the only drawing move is 11.Bg1! After 7.Bg3? Kc1 8.Kc3 Kd1 9.Kd3 c5 10.Kc3 Ke2 the move 11.Bf2 is not possible.

#256: Bristol manoeuvre where White has to choose the right combination of clearance move and retreat. Only 1.Bc3 and 2.Qd4 work, since both pieces have to deal with the dangerous d-pawn: the wQ has to guard the promotion square, while the wB must be able to capture the pawn at move 6. The rest of the study is hardly interesting, except for the bonus of the final stalemate.

#257: Castling in studies is not so special any more: there are 390 studies present in my database in which White castles during the main line. Here White, being a full rook up, finds a way out of the double attack by building a battery by castling. The same idea was shown by Saetta e1d8 1952 (HhdbIV#25988).

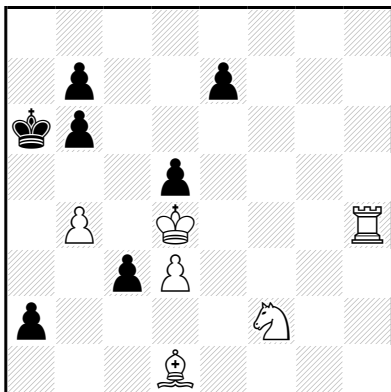
#343: The highlight of this study is the first move. Another example where the composer just selects the “longest” lines, rather than illustrating the tiny difference between key and (thematic) try. 1.Be4? Ba6 2.Kf6 (like the main line) fails to 2...Rf8+ cannot be met with 3.Bf7. Of course, then the main line should run: 1.Bd5 Ba6 2.Kf6 Rf8+ 3.Bf7, but also 3.Ke7 and 3.Kg6 win here. But that would hardly make it a study, wouldn't it? As a consequence, 1.Be4? is not a thematic try and the highlight of the study is lost.

#344: Only obvious moves.

#440: The composer calls 1.Sf6?/9.Sc3 thematic tries, but their refutations are rather different from the main solution. 3.Sg3+ gets two exclamation marks, but it is (almost) the only way to prevent a quick loss of that knight (Black threatens Kxh2-h3-h4). Although White has to avoid some pitfalls, the remaining moves are obvious.

#443: The stalemate, also with a similar introduction and a rush of both kings, is known from Gorgiev a1e2 1975 (HHdbIV#42389) and Aliev d2a4 2003 (HHdbIV#70243).

441 - Sergiy DIDUKH & Abdelaziz ONKOU
 Problemaz 2008
 MT Mohamed H.Bahaoui
 Prize

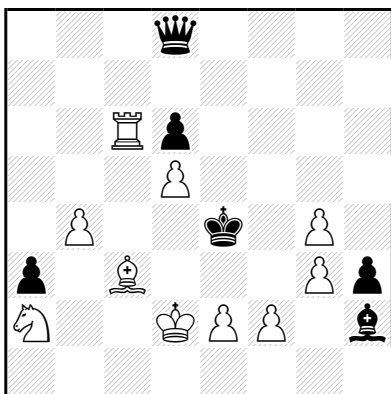


+ 6+7

1.b5+ Kxb5 2.Ba4+ Kxa4 3.Kxc3+ Ka3 4.Rh1 b5 5.d4 b4+ 6.Kd2 b3 7.Rh8 b2 8.Kc3 b1S+ 9.Kc2 Sc3 10.Rh1 b5 11.Kxc3 b4+ 12.Kd2 b3 13.Rh8(6) b2 14.Kc3 b1S+ 15.Kc2 Sc3 16.Rh1 Sb5 17.Rh3+ Ka4 18.Kb2 wins.

#441: After an appropriate introduction the composers managed to double an idea by Onate d4h4 1963 (HhdbIV#33604).

442 - Sergiy DIDUKH & Mikhaïl CROITOR
 Problemaz 2008
 MT Mohamed H.Bahaoui
 1st Honourable mention

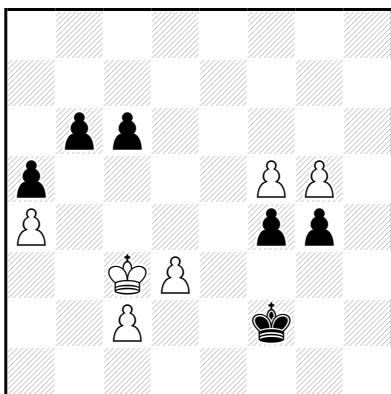


+ 10+6

1.Bf6! Qxf6 2.Nc3+ Ke5 3.f4+ Qxf4+ 4.gxf4+ Bxf4+ 5.e3 Bxe3+ 6.Kd3, and:
 - a2 7.Rc8!! (thematic try: 7.Rc7? a1Q 8.Rf7 Qa6+ 9.b5 Qc8) a1Q 8.Rf8 Qa6+ 9.b5 Qb6 10.Rf5 mate, or:
 - h2 7.Rc7!! (thematic try: 7.Rc8? h1Q 8.Rf8 Qh7+) h1Q 8.Rf7 a2 9.Rf5 mate.

#442: The sacrificial introduction has too much captures, but after 6.Kd3 two very nice main lines develop in which the wR has to chose the right squares to encircle the bK for a mate at f5.

346 - ILHAM ALIEV
 Problemaz 2008
 MT Mohamed H.Bahaoui
 2nd Honourable Mention

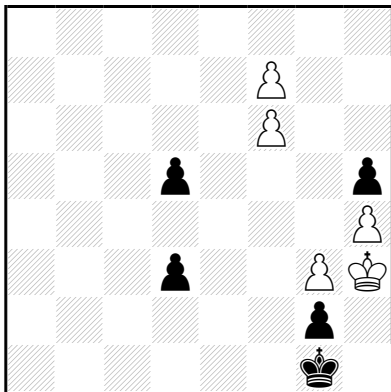


+ 6+6

1.g6 g3 2.g7 g2 3.g8Q f3 4.f6 g1Q 5.Qxg1+ Kxg1 6.f7 f2 7.f8Q f1Q 8.Qxf1+ Kxf1 9.Kd2! Kf2 10.d4 Kf3 11.d5! cxd5 12.Kd3 Kf2 13.Kd4 Ke2 14.Kxd5 Kd2 15.Kc6 Kc3 16.Kb5 Kxc2 17.Kxb6 Kc3 18.Kxa5 wins.

#346: After a double Queen-swap introduction, the study-like moves are 9.Kd2! and 11.d5!

345 - Ilham Nuruoglu ALIEV
 Problemaz 2008
 MT Mohamed H.Bahaoui
 1st Commendation

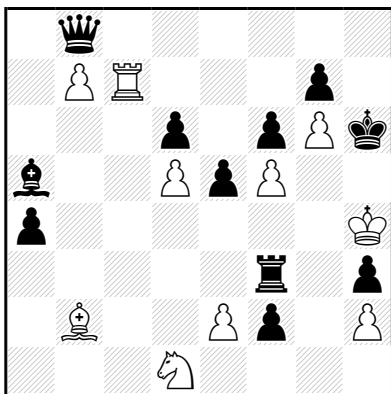


+ 5+5

1.f8Q Kh1 2.Qc5 g1S+ 3.Qxg1+ Kxg1 4.f7 d2
 5.f8Q d1Q 6.Qf3! Qd2 (6...Qxf3 stalemate)
 7.Qe3+ Qxe3 stalemate.

#345: "Tiny" study with a stalemate (after 6...Qxf3) that surprisingly seems to be original.

347 - Alain PALLIER
 Problemaz 2008
 MT Mohamed H.Bahaoui
 2nd Commendation

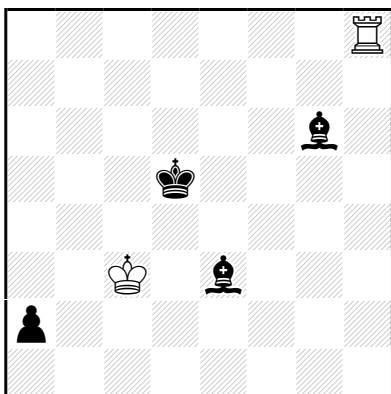


= 10+11

1.Bc1+ Rf4+ 2.Bxf4+ exf4 3.Sxf2 Be1 4.Rc8
 Bxf2+ 5.Kg4 Ba7 6.Rc3! Be3 7.Rc8! Ba7 8.Rc3
 positional draw.

#347: Curious and apparently original positional draw. The composer has worked with the same scheme earlier: Pallier g4h6 2006 (HhdbIV#73591).

439 - Jean-Marc LOUSTAU
 Problemaz 2008
 MT Mohamed H.Bahaoui
 3rd Commendation



= 2+4

1.Rd8+ Kc5 2.Kb2 Bf7 3.Ka1 Bf4 4.Rc8+ Kb4
 5.Rc2 Be5+ 6.Rb2+ Kc3 7.Re2 Bh8 8.Rh2
 (8.Rb2? Bd4) Bg7 9.Rg2 (9.Rh7? Be5!) Bf6 10.Rf2
 Be5 11.Re2 (11.Rf5? Bh8) Bd4 12.Re4 Bh8
 13.Rh4 Bg7 14.Rg4 Bf6 15.Rf4 Be5 16.Re4 Bh8
 17.Rh4 positional draw.

#439: The author has made many studies with this material (there are 29 studies in my database), with the majority having hardly any study-like content, are auto-anticipated, or are exceedingly difficult to understand (which is not intended as a positive feature here). But in the present study, after move 8, there is a positional draw with the wR on two horizontals. It is easy to understand why certain rook moves are wrong.

The award becomes final three months after publication.